



22,388 SF AVAILABLE  
SHADOW ANCHORED BY FUTURE COSTCO  
1125 East Ogden Avenue  
Naperville, Illinois



**GREATSTREET**  
REALTY PARTNERS, LLC

**STEVE PILAFAS**

847-472-5008

[steve@greatstreetrealty.com](mailto:steve@greatstreetrealty.com)

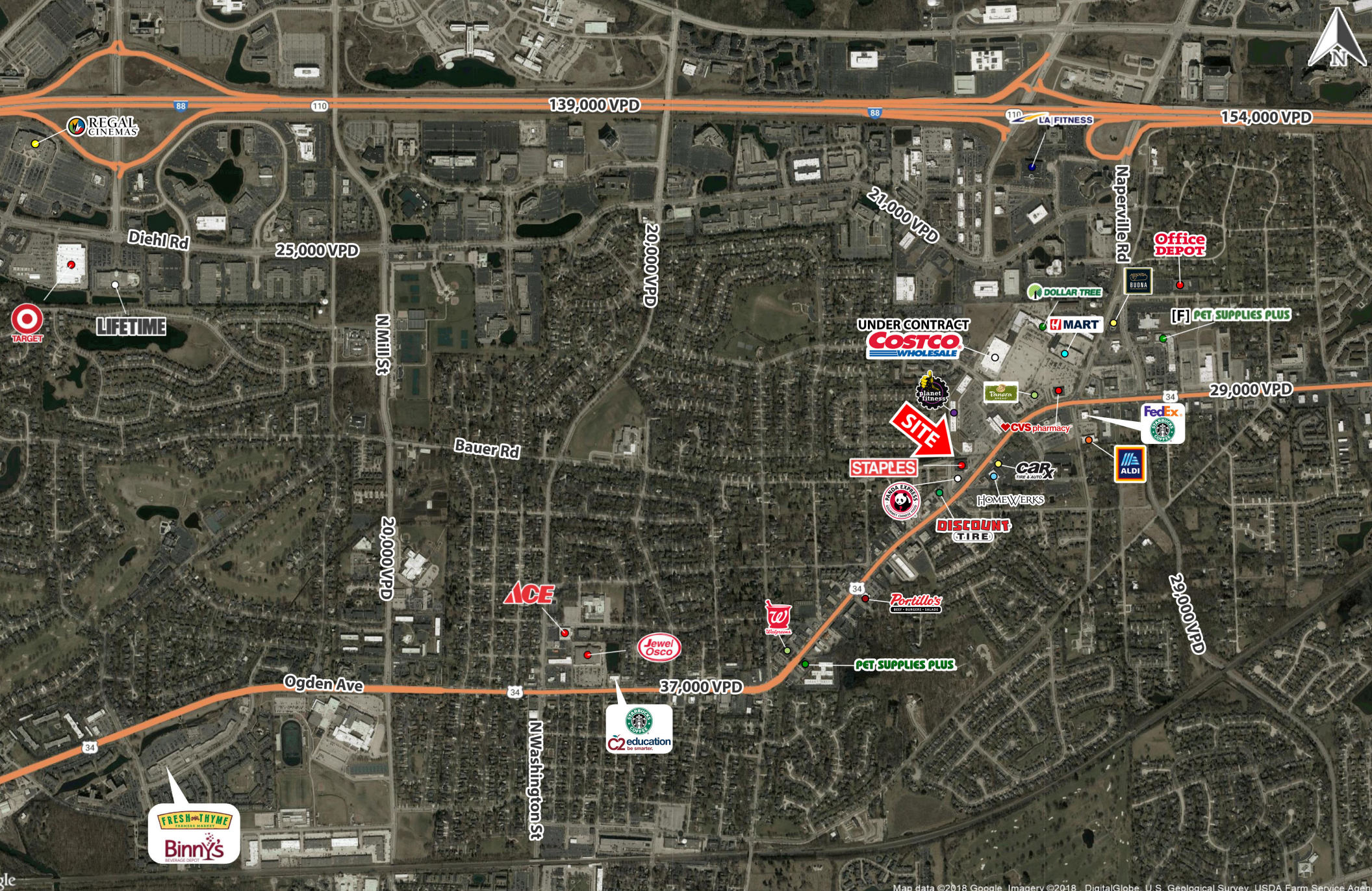
**SULLY STADLER**

847-472-5013

[sully@greatstreetrealty.com](mailto:sully@greatstreetrealty.com)

The information provided herein has either been given to us by the owner of the property or obtained from sources that we deem reliable. We have no reason to doubt its accuracy but we do not guarantee it. You should conduct a careful, independent investigation on the property and verify all information. Any reliance on this information is solely at your own risk.





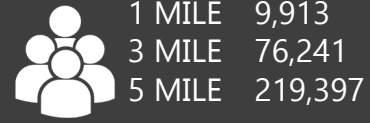
Map data ©2018 Google Imagery ©2018 DigitalGlobe, U.S. Geological Survey, USDA Farm Service Agency

## DEMOGRAPHICS

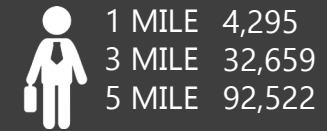
VEHICLES PER DAY



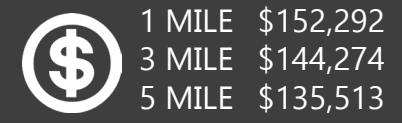
TOTAL POPULATION



COLLEGE EDUCATION



AVERAGE HH INCOME



The information provided herein has either been given to us by the owner of the property or obtained from sources that we deem reliable. We have no reason to doubt its accuracy but we do not guarantee it. You should conduct a careful, independent investigation on the property and verify all information. Any reliance on this information is solely at your own risk.





1125 E Ogden Ave		1 mi radius	3 mi radius	5 mi radius
Naperville, IL 60563				
POPULATION	2018 Estimated Population	9,913	76,241	219,397
	2023 Projected Population	9,798	75,573	217,257
	2010 Census Population	9,525	73,922	212,063
	2000 Census Population	8,509	72,954	210,578
	Projected Annual Growth 2018 to 2023	-0.2%	-0.2%	-0.2%
	Historical Annual Growth 2000 to 2018	0.9%	0.3%	0.2%
HOUSEHOLDS	2018 Estimated Households	3,793	30,801	88,046
	2023 Projected Households	3,851	31,352	89,543
	2010 Census Households	3,540	29,085	82,807
	2000 Census Households	3,053	28,065	78,808
	Projected Annual Growth 2018 to 2023	0.3%	0.4%	0.3%
	Historical Annual Growth 2000 to 2018	1.3%	0.5%	0.7%
AGE	2018 Est. Population Under 10 Years	12.1%	10.6%	11.2%
	2018 Est. Population 10 to 19 Years	13.7%	13.3%	12.8%
	2018 Est. Population 20 to 29 Years	11.5%	13.7%	12.9%
	2018 Est. Population 30 to 44 Years	19.2%	18.0%	18.8%
	2018 Est. Population 45 to 59 Years	22.7%	21.4%	21.8%
	2018 Est. Population 60 to 74 Years	16.2%	16.7%	16.3%
	2018 Est. Population 75 Years or Over	4.6%	6.3%	6.2%
	2018 Est. Median Age	39.6	39.9	40.2
MARITAL STATUS & GENDER	2018 Est. Male Population	49.5%	49.2%	48.9%
	2018 Est. Female Population	50.5%	50.8%	51.1%
	2018 Est. Never Married	29.1%	32.0%	30.1%
	2018 Est. Now Married	57.4%	51.2%	53.2%
	2018 Est. Separated or Divorced	9.7%	11.4%	11.7%
	2018 Est. Widowed	3.8%	5.4%	5.0%
INCOME	2018 Est. HH Income \$200,000 or More	22.3%	19.5%	17.3%
	2018 Est. HH Income \$150,000 to \$199,999	14.4%	11.8%	12.4%
	2018 Est. HH Income \$100,000 to \$149,999	22.6%	18.1%	19.6%
	2018 Est. HH Income \$75,000 to \$99,999	9.9%	12.0%	12.9%
	2018 Est. HH Income \$50,000 to \$74,999	10.2%	12.6%	13.6%
	2018 Est. HH Income \$35,000 to \$49,999	7.8%	10.8%	9.4%
	2018 Est. HH Income \$25,000 to \$34,999	4.1%	5.1%	4.9%
	2018 Est. HH Income \$15,000 to \$24,999	4.8%	4.6%	4.8%
	2018 Est. HH Income Under \$15,000	3.8%	5.5%	5.2%
	2018 Est. Average Household Income	\$152,292	\$144,274	\$135,513
	2018 Est. Median Household Income	\$120,403	\$105,923	\$104,308
	2018 Est. Per Capita Income	\$58,289	\$58,442	\$54,469
	2018 Est. Total Businesses	986	5,609	11,613
	2018 Est. Total Employees	11,647	81,136	158,969